



Government of India
Ministry of Earth Sciences



India Meteorological Department

PRESS RELEASE-4

Time of issue: 1330 hours IST

Dated: 6th August, 2024

Sub: Depression over Northeast Rajasthan weakened into a Low Pressure Area

Yesterday's depression over Northeast Rajasthan and neighbourhood moved west-northwestwards and weakened into a Well Marked Low Pressure area in the early morning (0530 hours IST) and into a low pressure area over central parts of Pakistan in the same morning (0830 hours IST) of today, the 6th August, 2024.

This is the last press release with respect to this system.

For regular updates kindly visit www.rsmcnewdelhi.imd.gov.in and www.mausam.imd.gov.in

Contact: Cyclone Warning Division, Office of the Director General of Meteorology, India Meteorological Department, Ministry of Earth Sciences.

E-mail: cyclonewarningdivision@gmail.com, Website: rsmcnewdelhi.imd.gov.in

Spatial rainfall distribution: Isolated: <25%, A few: 26-50%, Many: 51-75%, Most: 76-100%

Rainfall amount (mm): Heavy rain: 64.5 – 115.5, Very heavy rain: 115.6 – 204.4, Extremely heavy rain: 204.5 or more.

Annexure - I

24 hours cumulative realised rainfall (in cm) ending at 0830 hours IST of 5th August

East Rajasthan:

Nasirabad (Ajmer) - 17, Srinagar (Ajmer) - 14, Pisagan (Ajmer) - 13, Ajmer (Ajmer) - 11, Ajmer Tehsil (Ajmer) - 11, Mangliawas (Ajmer) - 10, Pushkar (Ajmer) - 9, Deogarh (Rajsamand) - 9, Nayanagar/beawar (Ajmer) - 8, Tatgarh (Ajmer) - 8,

West Rajasthan:

Pali (Pali) - 26, Pokhran (Jaisalmer) - 19, Marwar Junction (Pali) - 17, Ahore Sr (Jalore) - 16, Jalore (Jalore) - 15, Rohat Sr (Pali) - 13, Nachna / Lathi (Jaisalmer) - 13, Fatehgarh (Jaisalmer) - 12, Phalodi (Jodhpur) - 11, Sojat (Pali) - 10, Phalodi Tehsil (Jodhpur) - 10, Gida (Barmer) - 10, Nokh(Jaisalmer) - 10, Jaisalmer (Jaisalmer) - 9, Luni (Jodhpur) - 8

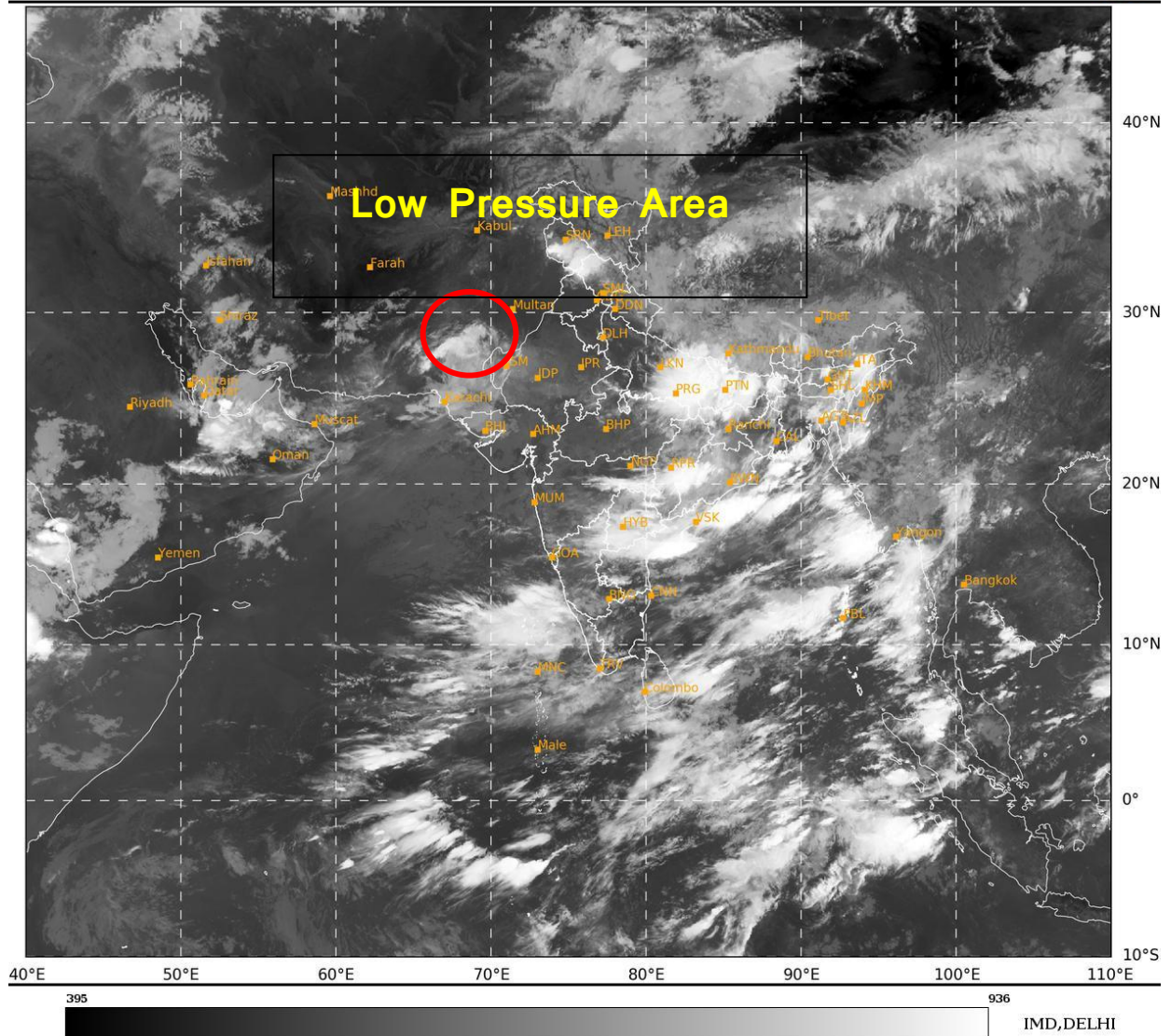
Madhya Maharashtra:

Gaganbawada (Kolhapur) - 7, Lonavala (Pune) - 7

Annexure – II

SAT : INSAT-3DR IMG
IMG_TIR1 10.8 um
L1C Mercator

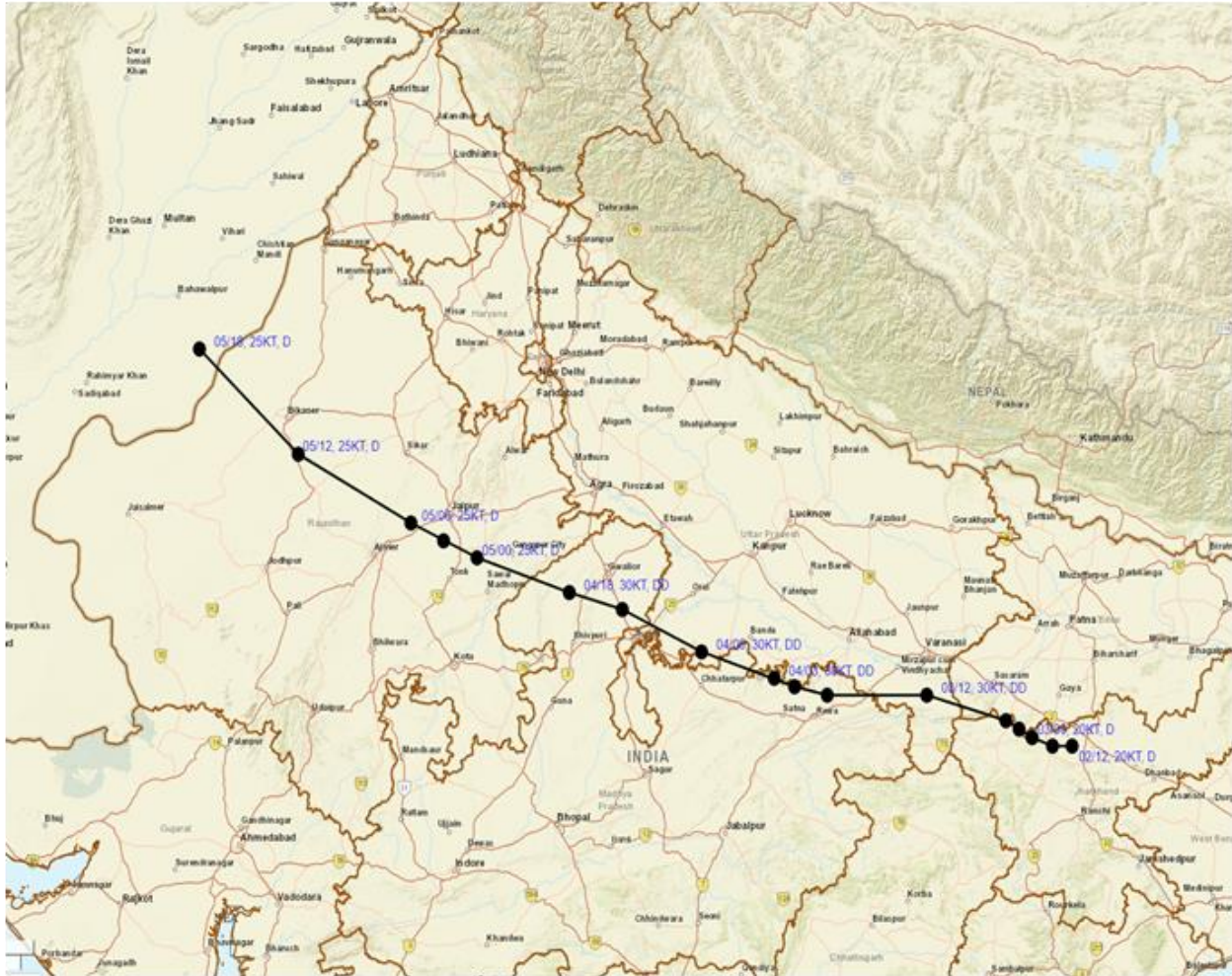
06-08-2024/(0245 to 0312) GMT
06-08-2024/(0815 to 0842) IST



Contact: Cyclone Warning Division, Office of the Director General of Meteorology, India Meteorological Department, Ministry of Earth Sciences.
E-mail: cyclonewarningdivision@gmail.com, Website: rsmcnewdelhi.imd.gov.in
Spatial rainfall distribution: Isolated: <25%, A few: 26-50%, Many: 51-75%, Most: 76-100%
Rainfall amount (mm): Heavy rain: 64.5 – 115.5, Very heavy rain: 115.6 – 204.4, Extremely heavy rain: 204.5 or more.



OBSERVED TRACK OF DEEP DEPRESSION OVER INDIA DURING 02ND AUGUST to 06TH AUGUST, 2024.



DATE/TIME IN UTC
 IST=UTC + 0530
L: LOW PRESSURE AREA
WML: WELL MARKED LOW PRESSURE AREA
D: DEPRESSION (17-27 KT)
DD: DEEP DEPRESSION (28-33 KT)
CS: CYCLONIC STORM (34-47 KT)
SCS: SEVERE CYCLONIC STORM (48-63KT)
VSCS: VERY SEVERE CYCLONIC STORM (64-89 KT)
ESCS: EXTREMELY SEVERE CYCLONIC STORM (90-119 KT)
SuCS: SUPER CYCLONIC STORM (≥ 120 KT)

● LESS THAN 34 KT
 ○ 34-47 KT
 ⊙ ≥ 48 KT
 — OBSERVED TRACK
 — FORECAST TRACK
 ■ CONE OF UNCERTAINTY
AREA OF MAXIMUM SUSTAINED WIND SPEED:
 ■ 40-50 KMPH GUSTING TO 60 KMPH

IMPACT OVER THE SEA

MSW (knot/kmph)	Impact	Action
28-33 (52-61)	Very rough seas	Total suspension of fishing operations
34-49 (62-91)	High to very high seas	Total suspension of fishing operations
50-63 (92-117)	Very high seas	Total suspension of fishing operations
≥ 64 (≥118)	Phenomenal	Total suspension of fishing operations

Contact: Cyclone Warning Division, Office of the Director General of Meteorology, India Meteorological Department, Ministry of Earth Sciences.

E-mail: cyclonewarningdivision@gmail.com, Website: rsmcnwdelhi.imd.gov.in

Spatial rainfall distribution: Isolated: <25%, A few: 26-50%, Many: 51-75%, Most: 76-100%

Rainfall amount (mm): Heavy rain: 64.5 – 115.5, Very heavy rain: 115.6 – 204.4, Extremely heavy rain: 204.5 or more.